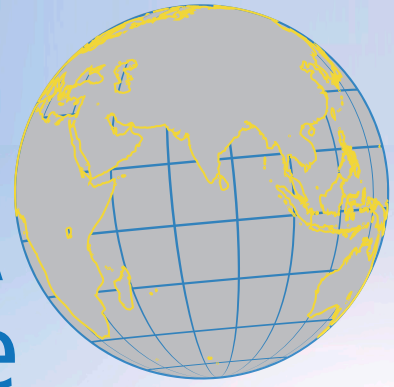


INTERNATIONAL TRAUMA conference



TAMPA, FLORIDA 🌞 NOVEMBER 11-15, 2020

EARLY BIRD DISCOUNT!

Secure your space for 2020 now* and SAVE!

Sign up by March 1, 2020, to join ITLS in Tampa
and take \$100 off your vendor registration!

*Registration and payment in full must be received
by March 1, 2020, for discount to apply.

**CORPORATE SUPPORT
OPPORTUNITIES**
exhibit . sponsor . customize

ITRAUMA.org/CONFERENCE



Sponsored by



ITLS
International
Trauma Life Support



ITLS understands your need for maximum exposure: Make global connections with ITLS in 2020

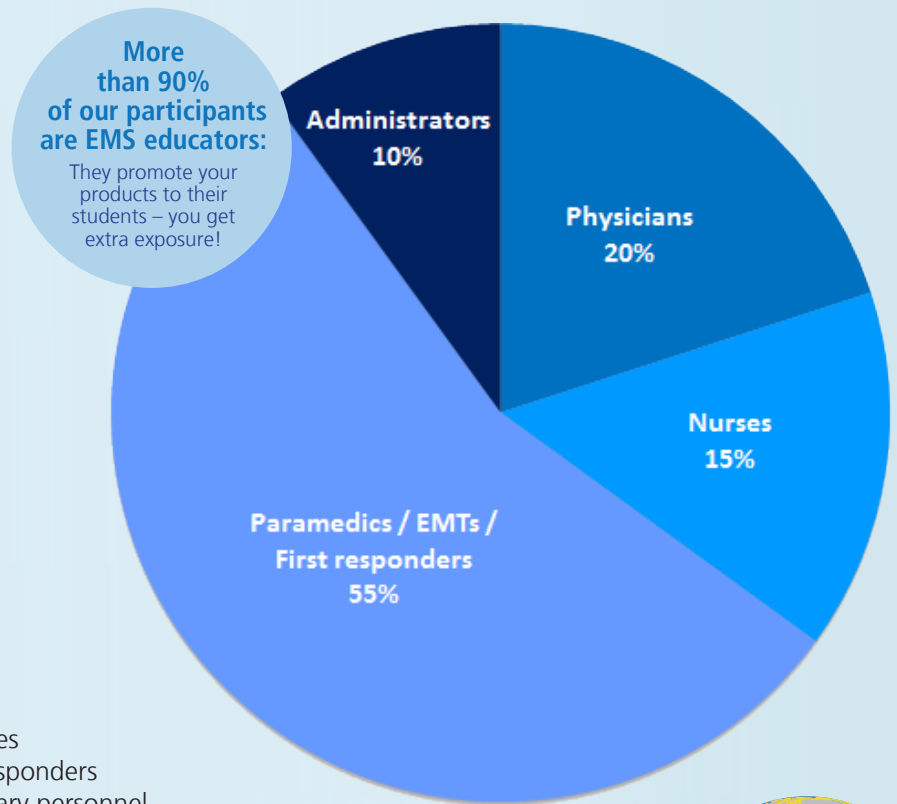
Join International Trauma Life Support for the world's premier prehospital trauma conference attracting EMS professionals from around the globe.

Exhibiting at the International Trauma Conference brings you face-to-face with key decision makers who purchase emergency medical products and services for EMS systems, hospitals and training institutions around the world. Target a diverse audience of industry professionals with ITLS.

Who attends?

- Emergency physicians
- Emergency nurses
- Paramedics
- EMS administrators
- Trauma surgeons
- Critical-care nurses
- EMTs and first responders
- Tactical and military personnel

Conference attendance averages 300 participants:



Target a global market with ITLS

At the 2019 International Trauma Conference, **24 countries** were represented:

Australia, Barbados, Belgium, Brazil, Canada, China, France, Germany, Hong Kong, India, Italy, Jamaica, Japan, Jordan, Nigeria, Portugal, Russia, Singapore, Slovenia, South Korea, Spain, Ukraine, United Kingdom & United States.



2020 Exhibit Space Rates & Benefits

Your presence at the International Trauma Conference includes:

- One 6-foot draped table and two chairs for 2 company representatives
- A 100-word description of your products and services and your corporate logo in the onsite materials
- Your corporate logo and a link to your website posted on ITRAUMA.org starting at the time of your registration, plus an enduring link after the conference
- A complete post-show listing of registrant addresses for post-event marketing
- Complimentary continental breakfast and coffee breaks during exhibit hours

Standard Exhibit Space

For-profit org: \$895 **Non-profit org:** \$695

Add on: Additional table: \$400 | Additional exhibitor badge: \$175

FEATURES OF THE EXHIBIT HALL FOR 2020:

- **Longer breaks for more dedicated exhibit time and networking**
- **Lunch in the hall on day one**
- **Prize drawings to encourage attendees to visit the exhibit hall and engage with vendors**



Who exhibits with ITLS?

Industry leaders that include SAM Medical, Pearson-Brady, Nasco Healthcare-Simulaids, TruCorp LTD, North American Rescue, and more. See past sponsors and exhibitors at ITRAUMA.org/conference

Conference Location **HILTON TAMPA DOWNTOWN**

211 N. Tampa St.
Tampa, FL 33602

Reservations: 800-HILTONS

Book online: ITRAUMA.org/tampa

The conference room rate of \$149 per night plus all applicable taxes includes complimentary guest room WiFi. The cut-off date for this rate is October 19, 2020.

Exhibit Schedule

Exhibit Move-In

Thursday, November 12, 2020:
3:30 PM - 5:30 PM

Exhibit Hours

Thursday, November 12, 2020:
6:00 PM - 8:30 PM

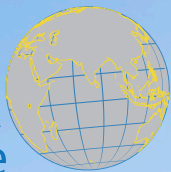
Friday, November 13, 2020:
7:00 AM - 3:00 PM

Exhibit Move-Out

Friday, November 13, 2020:
3:00 PM - 5:00 PM

Exhibit hours are subject to change. Exhibitors may not dismantle their booths earlier than 3:00 PM Friday, November 13.

INTERNATIONAL TRAUMA conference



TAMPA, FLORIDA ☀️ **NOVEMBER 11-15, 2020**
CORPORATE SUPPORT REGISTRATION

To register, please complete and return this form with payment information to:

International Trauma Life Support
3000 Woodcreek Drive, Suite 200
Downers Grove, IL 60515 USA

Or fax to: **630.495.6404** Attn: Sue McDonough
Questions? Call: **888.495.ITLS** or **630.495.6442, ext. 201**
Email: **suem@itrauma.org** Log on: **www.itrauma.org**

COMPANY INFORMATION

All Information in this section will be published in the onsite meeting program for attendees.

*Company name:

Exhibitors' names as they should appear on badges:

*Company mailing address:

*City: _____ *State/Province: _____

*Zip/Postal Code: _____ *Country: _____

*Phone: _____ *Company Website: _____

Toll-Free Phone: _____ Company Email: _____

PRIMARY CONTACT

All exhibitor correspondence will be sent to the organization or company's primary contact using the information provided below. If this is not acceptable, please provide alternative information.

Contact name and title:

Address: _____

City: _____

State/Province: _____

Zip/Postal Code: _____

Country: _____

Phone: _____

Fax: _____

Email: _____

Please indicate your interest in the following (all prices listed in U.S. Dollars):

PLATINUM PATRON OPPORTUNITIES

☐ **Continental Breakfast Package** - \$7,500

☐ **Editorial Board Product Showcase** (November 12) - \$5,000

☐ **Breakfast or Lunch Product Showcase** - \$3,500

Choose: ☐ Breakfast - November 13 ☐ Breakfast - November 14 ☐ Lunch - November 14

☐ **Platinum Conference Supporter** - \$3,000

GOLD PATRON OPPORTUNITIES

☐ **Mobile App** - \$2,500

☐ **Name Badge** - \$2,500

☐ **Refreshment Breaks** - \$2,500 per day

Choose: ☐ November 13 ☐ November 14 **OR** ☐ \$4,500 - Full conference exclusive

☐ **Gold Conference Supporter** - \$2,000

SILVER PATRON OPPORTUNITIES

☐ **Step-and-Repeat Photo Background with Company Logo** - \$1,500

☐ **Opening Reception** - \$1,500 (includes 2 hors d'oeuvres trays) at your booth

☐ Add _____ hors d'oeuvres tray - \$250 per additional tray

☐ **Notepad and Pen with Company Logo** - \$1,250

☐ **Silver Conference Supporter** - \$1,000

STANDARD EXHIBIT SPACE

☐ **For-profit org** - \$895 ☐ **Non-profit org** - \$695

Add on: ☐ Additional table - \$400 ☐ Additional exhibitor badge(s) - \$175 x quantity: _____

Total Fee: \$ _____

Please include up to a 100-word company description and a high-resolution logo (EPS preferred; PDF, JPEG, and TIF accepted) for inclusion in participant materials. Submissions should be emailed to **suem@itrauma.org** and must be received by **October 1, 2020**.

We agree to abide by the rules and regulations listed and which are part of the agreement between myself/our company and International Trauma Life Support. We also agree to comply with the ACCME Standards for Commercial Support and authorize reservation of space at the 2020 International Trauma Conference.

Signature: _____

Date: _____

Payment Method (please do not send cash)

☐ Check enclosed (payable to ITLS)

☐ Mastercard ☐ Discover

☐ VISA ☐ American Express

Credit Card Number

Exp. Date: _____

Sign up by March 1, 2020 to be part of the 2020 International Trauma Conference and take \$100 off your registration!