

# INTERNATIONAL TRAUMA conference



**November 7-10, 2018**

**ST. LOUIS, MISSOURI**

Hilton St. Louis at the Ballpark

*World-class  
trauma education  
and networking in  
downtown St. Louis*



**[ITRAUMA.org/conference](http://ITRAUMA.org/conference)**



# INTERNATIONAL TRAUMA conference



**November 7-10, 2018**  
**ST. LOUIS, MISSOURI**

Hilton St. Louis at the Ballpark

## *Who should attend:*

**Paramedics • Nurses • EMTs and  
first responders • Emergency  
physicians • Trauma surgeons •  
EMS administrators • EMS educators**

Join us in November for the world's premier trauma conference attracting EMS and trauma care professionals from around the globe. Catch up with old friends and make new connections at a program that celebrates the diversity of trauma worldwide.



**[ITRAUMA.org/conference](http://ITRAUMA.org/conference)**

## *Featured Speakers:*

- **Cindy Bitter, MD, MA, MPH, FACEP**
- **Bryan E. Bledsoe, DO, FACEP**
- **Maia Dorsett, MD, PhD**
- **Gerald R. Fortuna, Jr., MD, MBA, FACS Col, USAF, MC, SFS**
- **Jon R. Krohmer, MD, FACEP, DABEM-EMS**
- **Matthew D. Sztajnkrycer, MD, PhD, FACEP**



**ITLS**  
International  
Trauma Life Support



# REGISTER

## ITRAUMA.org/ conference

Register before October 1 and SAVE!

*Trauma education and networking  
in vibrant St. Louis ...*

*Only at the International Trauma Conference*

### *Hot Topics on the Agenda:*

- Evolution of clinical EMS care • REBOA
- Adjuncts to circulation • Out-of-hospital hemorrhage control • Chemical warfare agents • Las Vegas mass shooting response • Trending EMS topics • More



#trauma18







## *Friday, November 9*

8:15 am - 9:15 am

### **Future of EMS: Where Are We Going?**

**Jon R. Krohmer, MD, FACEP, DABEM-EMS**

9:45 am - 10:30 am

### **The Golden Hour of Trauma in the 21st Century**

**Yosef Jose Greenspon, MD, FACS**

11:10 am - 12:00 pm

### **Lightning Rounds: It's a Bloody Mess – Adjuncts to Circulation**

**Maia Dorsett, MD, PhD**

**Melissa Kroll, MD**

**John Wilmas, MD, FACEP**

1:00 pm - 5:00 pm

### **Trauma Competition**

Watch teams from around the globe compete in simulated trauma scenarios: CE hours available for spectators!

## *Saturday, November 10*

8:00 am - 8:45 am

### **Chemical Warfare Agents – Why They Are Still Relevant**

**Matthew D. Sztajnkrzyer, MD, PhD, FACEP**

8:45 am - 9:20 am

### **REBOA: Fad or Game Changer? Trends in Emergency Resuscitation Past, Present and Future**

**Gerald R. Fortuna, Jr., MD, MBA, FACS, Col, USAF, MC, SFS**

9:30 am - 10:15 am

### **Out-of-Hospital Hemorrhage Control**

**Brandon B. Bleess, MD, EMT-T, FAAEM**

10:35 am - 11:20 am

### **The P's of Preventing Hypoxia During RSI**

**Michael D. Gooch, DNP, ENP, EMT-P**

11:30 am - 12:15 pm

### **Lightning Rounds: Trending Topics**

**Laurie Punch, MD, FACS**

**Jeffrey Siegler, MD, EMT-P, EMT-T**

**Sven Steen, MD**

1:40 pm - 2:25 pm

### **CONCURRENT SESSIONS:**

#### **Burn Management in the Low-Resource Setting**

**Cindy Bitter, MD, MA, MPH, FACEP**

#### **Ultrasound Uses in Pediatric Trauma**

**Qirong Du, MD**

2:35 pm - 3:20 pm

### **CONCURRENT SESSIONS:**

#### **Anticoagulation in the Extreme Rural Trauma Patient: The Question of Reversibility and Data from RACCR**

**David Cornutt, MD**

#### **IEDs, Blast Injuries and Treatments**

**Jarred Alden, MA, NRP**

3:30 pm - 4:30 pm

### **October 1, 2017: The Las Vegas Shooting**

**Bryan E. Bledsoe, DO, FACEP**

*Full conference  
agenda  
available online!*

See Pages 9-11  
for special events  
and pre-conference  
workshops at the  
2018 International  
Trauma Conference



### *New Format for Research in 2018!*

10-minute Research Forum topics will be presented on Friday and Saturday, directly following general sessions. Complete schedule at [ITRAUMA.org/conference!](http://ITRAUMA.org/conference!)

# Lightning Rounds New in 2018!

## FACULTY SPOTLIGHT

*Powerful multi-topic presentations packed with takeaways to use in your practice immediately*

### It's a Bloody Mess – Adjuncts to Circulation

Update your practice with lightning rounds focused on bleeding control and adjuncts to circulation. Explore special considerations for management of geriatric trauma patients with Dr. Maia Dorsett, with a focus on anticoagulant use and reversal. Review permissive hypotension with Dr. Melissa Kroll to identify indications for use and patient exceptions. Analyze data on transfusion of blood products in the pre-hospital setting with Dr. John Wilmas, to evaluate the efficacy of earlier use to treat active hemorrhage.

#### Featuring Presenters:



#### **Maia Dorsett, MD, PhD**

Attending Physician, Clinical Instructor, Department of Emergency Services, University of Rochester Medical Center, Rochester, New York, USA

#### **Topic:**

**Management of the Geriatric Trauma Patient on Anticoagulation Therapy**



#### **Melissa Kroll, MD**

Clinical EMS Instructor, Division of Emergency Medicine, Washington University School of Medicine, St. Louis, Missouri, USA

#### **Topic:**

**Permissive Hypotension**



#### **John Wilmas, MD, FACEP**

Medical Director, ARCH Air Medical Service, St. Louis, Missouri, USA

#### **Topic:**

**Transfusions in the Pre-Hospital Setting**

### Trending Topics

Trending topics lightning rounds pulls together a diverse set of hot issues in pre-hospital trauma care. Focus on pre-hospital practice with Dr. Laurie Punch, who will define the role of hemostasis in preventing trauma deaths and discuss the potential impact of training the public as first responders. Focus on pre-hospital safety with a review of body armor by Dr. Jeffrey Siegler, who will summarize the evidence to support ballistic protection and body armor for use in EMS. Focus on pre-hospital well-being with Dr. Sven Steen, who will demonstrate the effects of provider fatigue and best practices for mitigation.

#### Featuring Presenters:



#### **Laurie Punch, MD, FACS**

Associate Professor of Surgery, Washington University in St. Louis School of Medicine, St. Louis, Missouri, USA

#### **Topic:**

**Pre-Hospital Hemostasis and Preventable Trauma Deaths**



#### **Jeffrey Siegler, MD, EMT-P, EMT-T**

EMS Physician, Section of EMSI, Instructor, Division of Emergency Medicine, Washington University School of Medicine, St. Louis, Missouri, USA

#### **Topic:**

**EMS and Body Armor**



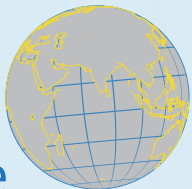
#### **Sven Steen, MD, EMT-T**

EMS Fellow, Division of Emergency Medicine, Washington University School of Medicine, St. Louis, Missouri, USA

#### **Topic:**

**Pre-Hospital Provider Fatigue**





## Learning Objectives

After the conference sessions, participants will have increased knowledge of best practices based on current literature regarding each session that participants attend, applying the clinical, practical and education review points of each attended session, allowing change in practice by integrating trauma's latest innovative strategies in emergent care arenas for their health systems and community



### Bryan Bledsoe, DO, FACEP, FAEMS

Professor, Department of Emergency Medicine, University of Nevada, Las Vegas School of Medicine; Attending Physician, University Medical Center of Southern Nevada; Las Vegas, Nevada, USA

#### Presenting:

#### October 1, 2017: The Las Vegas Shooting

The largest mass shooting in modern U.S. history occurred when a gunman opened fire on a large outdoor country music venue in Las Vegas on October 1, 2017. Popular EMS author Dr. Bryan Bledsoe, a Las Vegas resident, will illustrate the timeline of events, the injuries, and the emergency response that occurred that night and in the following days. His gritty, honest presentation will examine strategies that should be implemented as part of active shooter event planning, based on real-life lessons learned as the result of unanticipated problems in the Las Vegas response.



### Brandon Bleess, MD, EMT-T, FAAEM

EMS Academic Faculty, Medical Director, OSF Life Flight, Clinical Assistant Professor, Emergency Medicine, University of Illinois College of Medicine at Peoria; Attending Physician, Department of Emergency Medicine, OSF Saint Francis Medical Center, Peoria, Illinois, USA

#### Presenting:

#### Out-of-Hospital Hemorrhage Control

The ultimate goal of out-of-hospital hemorrhage care is to control the bleed before it stops itself. Dr. Brandon Bleess will address various options for hemorrhage control in the out-of-hospital setting, including history, public health initiatives, and options for patient access and transport.



### Gerald Fortuna, Jr., MD, MBA, FACS, Col, USAF, MC, SFS

Director, Center for Sustainment of Trauma and Readiness Skills (CSTARS), Assistant Professor, Sections of Vascular

Surgery and Trauma, Washington University of School of Medicine, St. Louis, Missouri, USA

#### Presenting:

#### REBOA: Fad or Game Changer? Trends in Emergency Resuscitation Past, Present and Future

Dr. Gerald Fortuna will investigate REBOA and other trends in emergency resuscitation to analyze their benefits and efficacy. His evidence-based focus on aortic occlusion versus resuscitative thoracotomy will demonstrate a multidisciplinary targeted approach to hemorrhage control to establish innovative techniques and modern technology that may offer superior outcomes in properly selected patients.



### Michael D. Gooch, DNP, AC/F/ENP, EMT-P

Flight Nurse and Associate Professor of Nursing, Vanderbilt University, Nashville, Tennessee, USA

#### Presenting:

#### The P's of Preventing Hypoxia During RSI

Rapid sequence intubation is one of the most common advanced airway procedures performed as part of trauma patient management, but maximizing oxygenation with this practice is not without risks. Mr. Gooch identifies key techniques to modify current intubation practices to prevent hypoxia, including positioning, passive oxygenation and proper preoxygenation strategies. Discover the benefits and mitigate the risks.



# General Sessions



**Jose Yosef  
Greenspon,  
MD, FACS, FAAP**

Associate Professor of Surgery and Pediatrics, St. Louis University, SSM Health Cardinal Glennon Children's Hospital, St.

Louis, Missouri, USA

## Presenting:

### The Golden Hour of Trauma in the 21st Century

Pediatric trauma surgeon Dr. Jose Yosef Greenspon will examine the impact of aggressive prehospital care for polytrauma in the 21st century to improve patient outcomes. His session will demonstrate the evolution of the golden hour through history into contemporary practice, with a focus on identifying patients that would benefit most from aggressive management and strategies for effective triage.



**Matthew D.  
Sztajnkrycer,  
MD, PhD, FACEP**

Professor of Emergency Medicine, Mayo Clinic, Rochester, Minnesota, USA

## Presenting:

### Chemical Warfare Agents – Why They Are Still Relevant

Since 1997, the development, production, and use of chemical weapons have been prohibited under the United Nations Chemical Weapons Convention. Despite this, there has been significant use of these banned substances in the past 5 years, including chemical attacks against civilians in Syria and Iraq, and the use of nerve agent in the assassination of Kim Jong Nam. In the current security climate, EMS responders must be aware of recent trends in chemical weapon use, as well as research into clinical effects, counter-measures, and triage. Dr. Matthew Sztajnkrycer will outline management of pulmonary, vesicant, and nerve agents, as well as issues in personal protection and mass human decontamination. Participant discretion is advised due to graphic content.



**Jon R. Krohmer, MD,  
FACEP**

Director, Office of EMS, The National Highway Traffic Safety Administration (NHTSA), Washington, DC, USA

## Presenting:

### Future of EMS: Where Are We Going?

Keynote speaker Dr. Jon Krohmer, Director of the Office of EMS for the U.S. National Highway Traffic Safety Administration (NHTSA), will kick off the conference with an inspirational discussion of the future of EMS and trauma care. Dr. Krohmer will illustrate the impact of coordinated regional trauma systems to improve patient care and will predict the transformative trends in clinical care over the next 20 years. Be at the forefront of developing and implementing a more cooperative, integrated approach to sharing pre-hospital and hospital resources for the most effective care of trauma patients.

## Continuing Education

**PHYSICIANS:** This activity has been planned and implemented in accordance with the accreditation requirements and policies of the Accreditation Council for Continuing Medical Education (ACCME) through the joint providership of the American College of Emergency Physicians, Illinois College of Emergency Physicians, and International Trauma Life Support. The American College of Emergency Physicians is accredited by the Accreditation Council for Continuing Medical Education to provide continuing medical education for physicians.

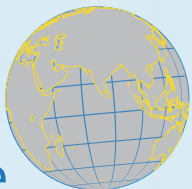
The American College of Emergency Physicians designates this live activity for a maximum of 24.5 *AMA PRA Category 1 Credits™*. Physicians should claim only the credit commensurate with the extent of their participation in the activity.

Approved by the American College of Emergency Physicians for a maximum of 24.5 hours of ACEP Category I credit.

**PHYSICIAN ASSISTANTS:** American Academy of Physician Assistants (AAPA) accepts certificates of participation for educational activities certified for *AMA PRA Category 1 Credits™* from organizations accredited by ACCME or a recognized state medical society. Physician assistants may receive a maximum of 24.5 hours of Category I credit for completing this program.

**PARAMEDICS AND EMTS:** This continuing education activity is approved by CAPCE for a maximum of 24.5 continuing education hours: 12.75 hours for 2-day conference, 8.0 hours for Critical Ultrasound for Prehospital Trauma Management course, 6.25 hours for the Geriatric Trauma Workshop, 7.25 hours for the ITLS High Threat Trauma Update, and 3.75 hours for Case-Based ITLS Workshop.

**NURSES:** This activity has been submitted to the Emergency Nurses Association for approval to award contact hours. The Emergency Nurses Association is accredited as an approver of continuing nursing education by the American Nurses Credentialing Center's Commission on Accreditation.



### Registration Desk Open

**Thursday, November 8**

12:00 pm - 6:00 pm

**Friday, November 9**

7:00 am - 5:00 pm

**Saturday, November 10**

7:30 am - 4:30 pm

### Join us for the Opening Reception!

**Thursday, November 8**

6:00 pm - 7:30 pm



**Jarred Alden, MA,  
NRP**

Lieutenant, Akron Fire Department,  
Akron, Ohio, USA

#### Presenting:

#### IEDs, Blast Injuries and Treatments

This tactical-focused presentation will spotlight blast injuries caused by IEDs, including a review of IED components and their specific mechanisms of injury as well as prediction of wounds based on blast stages. Lt. Jarred Alden will discuss treatment of blast injuries with a focus on strategies to prevent the lethal triad of hypothermia, acidosis, and coagulopathy.



**Cindy Bitter, MD,  
MA, MPH, FACEP**

Assistant Professor, St. Louis University,  
St. Louis, Missouri, USA

#### Presenting:

#### Burn Management in the Low-Resource Setting

Dr. Cindy Bitter will review global epidemiology of burn injuries and primary assessment of burn patients with management of immediate life threats. Her evidence-based session will evaluate novel burn wound care techniques in the austere setting and assess controversies in fluid management, including the risks of fluid creep. She will demonstrate the use of physiologic parameters to guide appropriate volume resuscitation and avoid the consequences of over-resuscitation.

*DISCLAIMER: The materials presented at this conference are made available for educational purposes only. The material is not intended to represent the only, nor necessarily the best methods for the medical situation discussed, but rather is intended to present an approach or opinion of the presenters which may be helpful or of interest to participants.*



**David Cornutt, MD**

Chairman, Department of Emergency Medicine, Medical Director, Department of Clinical Research, Regional West Health Systems, Scottsbluff, Nebraska, USA

#### Presenting:

#### Anticoagulation in the Extreme Rural Trauma Patient: The Question of Reversibility and Data from RACCR

Western Nebraska is home to several of the least densely populated counties in the continental United States. Nebraska native Dr. David Cornutt has collected early data on the reversal of anticoagulation in extreme rural trauma patients, drawing on his experiences at the regional Level 2 Trauma Center that receives trauma referrals from a 120,000 square mile radius. His session will review new anticoagulation agents of reversibility and their utilization, distribution and effects on the extreme rural trauma patient.



**Qirong Du, MD**

Associate Professor of Trauma, Xinhua Hospital, Shanghai Jiaotong University School of Medicine, Shanghai, China

#### Presenting:

#### Ultrasound Uses in Pediatric Trauma

Focused assessment with sonography in trauma (FAST) is routinely used to evaluate the adult blunt abdominal trauma patient, but its place in pediatric trauma has been less well defined. Recent reports suggest that the benefits of FAST for children include not only speed and accuracy but also limitation of the risks of radiation associated with computed tomography. Dr. Qirong Du will demonstrate the utility of FAST and contrast-enhanced ultrasound in detecting active bleeding, pseudoaneurysms, parenchymal organ injury, and other abdominal and torso trauma in pediatric patients.



# Special Events

## *Business Session for Voting Delegates*

**Thursday, November 8, 2018 3:00 pm - 5:00 pm**

A single Business Session will be held on Friday, November 8 before the conference begins. The Business Session will include voting for Board of Directors candidates and presentation of ITLS' annual awards. Credentialing will be open from 1:00 PM to 3:00 PM on Thursday. Delegates must be credentialed before entry.

## *Opening Reception*

**Thursday, November 8, 2018 6:00 pm - 7:30 pm**

Catch up with old friends and make new connections at the opening party to kick off the International Trauma Conference. The Exhibit Hall will open and light appetizers will be served. A cash bar will be available. Don't miss it!

## *Trauma Competition*

**Friday, November 9, 2018 1:00 pm - 5:00 pm**

Teams from around the world compete using the ITLS assessment to triage and treat trauma patients in simulated scenarios. Bring a team and showcase your patient care skills at this conference favorite event! Teams will complete 3 scenarios and the team with the highest accumulative score will be declared the winner. All team members must be registered for the full conference (special Competition Team rates available). The team captain is required to be a current ITLS-certified provider or instructor. Find out more at [ITRAUMA.org/competition](http://ITRAUMA.org/competition).

## *Research Forum*

**Friday, November 9 & Saturday, November 10, 2018 - Intermittent**

The Research Forum presents thought-provoking original research, scheduled intermittently throughout the 2-day conference. Selected abstracts will be presented as ePosters, developed as a 10-minute PowerPoint presentation of research highlights followed by a brief Q&A session. An Excellence in Research award will be presented to the top investigator.

## *Social Event: City Museum*

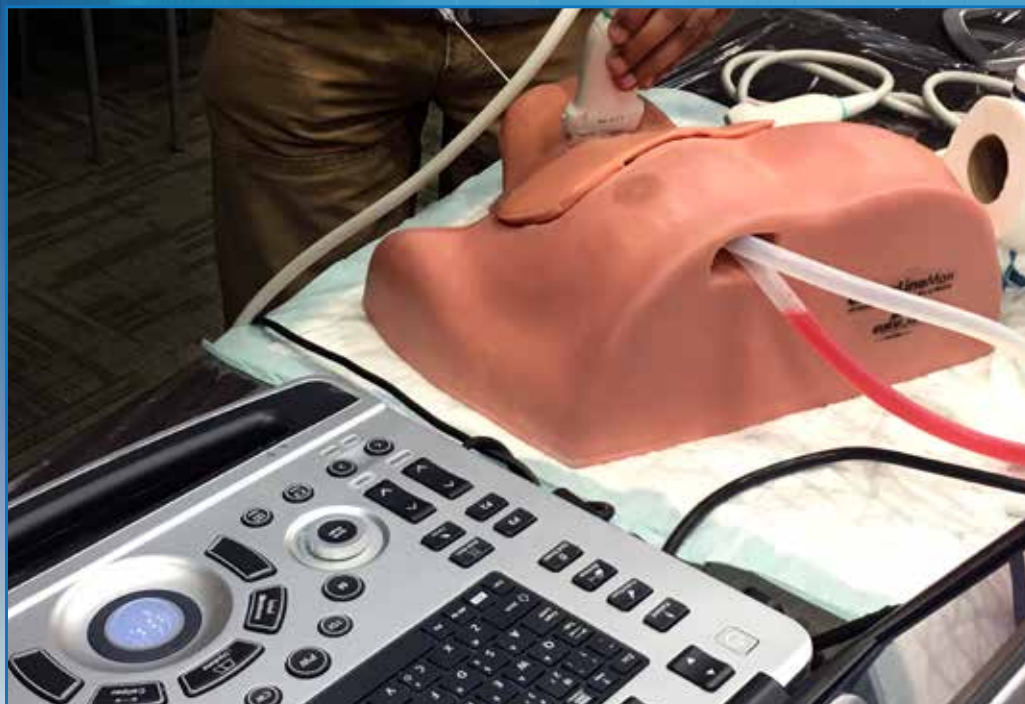
**Friday, November 9, 2018 7:00 pm - 11:00 pm**

Join your colleagues at the conference social event at the City Museum, an eclectic mixture of children's playground, fun house, surrealistic pavilion, and architectural marvel made out of unique found objects. With four floors of interactive exhibits to explore, you'll find novelty and delights at every turn. Your social event ticket gives you general admission access to the Museum all day Friday, not just during the reception hours. The reception will include a fried chicken dinner, a dessert bar sponsored by Missouri ACEP, and a cash bar. All registrants who wish to attend must purchase a ticket; tickets are NOT included with conference registration. Guests are welcome to attend.

**[ITRAUMA.org/conference](http://ITRAUMA.org/conference)**







## Pre-Conference Workshops

### CRITICAL ULTRASOUND FOR PREHOSPITAL TRAUMA MANAGEMENT

**Wednesday, November 7**  
8:30 am - 5:00 pm

The concept of critical ultrasound continues to evolve with the availability of high-quality mobile ultrasound devices and clinicians who have developed point-of-care ultrasound skills to manage patients in critical condition. This hands-on course demonstrates the integration of point-of-care image acquisition and interpretation with life support protocols, such as ITLS or ATLS, that follow an "ABCDE" or "head-to-toes" approach. This course model yields rapid, effective decision making and enhanced triage, diagnosis, therapy, monitoring and follow-up for patients with life-threatening conditions that include pneumothorax, hemothorax, hemoperitoneum, and cardiac tamponade.

**Eligibility:** Open to any current ITLS Provider or Instructor. Students receive an ITLS Critical Ultrasound certification upon completion.

**Cost:** \$175 - with 2-day conference  
\$199 - Workshop only

### GERIATRIC TRAUMA WORKSHOP

**Wednesday, November 7**  
8:30 am - 5:30 pm

This interactive workshop focuses on an interdisciplinary approach to geriatric trauma assessment and management. First, review risk factors in the geriatric population, discuss physiologic changes associated with aging, compare and contrast mechanisms of injury, and identify common challenges for assessment of geriatric patients. Then integrate your knowledge through practical application of the core principles in a fun and challenging geriatric obstacle course.

**Eligibility:** Open to any level of provider; no prerequisites. This is not a certification course.

**Cost:** \$99 - with 2-day conference  
\$129 - Workshop only

*Space is limited for all  
pre-conference programs!  
Register early to reserve your spot.*

### ITLS HIGH THREAT TRAUMA UPDATE

**Wednesday, November 7**  
8:30 am - 5:30 pm

This introduction to the new ITLS High Threat trauma program (replacing the ITLS Military course) presents a revised algorithm tailored specifically to the unique needs of the high threat environment, including military and tactical. This workshop demonstrates adapted skill sets for patient care in the high threat setting and introduces the new course materials, including patient scenarios and other course content. The ITLS High Threat program was developed to align to C-TECC and TCCC guidelines while incorporating lessons learned from first response and military personnel in the field. Discover a better approach to trauma care in the high-threat environment with ITLS.

**Eligibility:** Open to any level of provider; no prerequisites. This is not a certification course.

**Cost:** \$109 - with 2-day conference  
\$139 - Workshop only





## CASE BASED ITLS WORKSHOP

**Thursday, November 8**  
8:30 am - 12:30 pm

Case Based Learning (CBL) associates theory to practice by applying knowledge to scenarios using inquiry-based learning methods. The result is a more flexible course that enhances students' comprehension and skills. New scenarios will be released by ITLS this summer to facilitate the ITLS Core Curriculum. This workshop, led by members of the ITLS Editorial Board Scenario Development Workgroup who created the new scenarios, will guide you from start to finish through the process of conducting a CBL ITLS course to promote student-centered active learning with a focus on critical thinking and problem solving. Ready to take your courses to the next level? This workshop will show you all the strategies for CBL success.

**Eligibility:** Open to any level of provider; no prerequisites. This is not a certification course.

**Cost:** \$69 - with 2-day conference

\$89 - Workshop only

## LEADERSHIP FORUM

**Thursday, November 8**  
1:00 pm - 2:45 pm

The ITLS Leadership Forum focuses on cultivating the key leadership skills that help you accelerate the growth and development of your ITLS program worldwide. This targeted workshop explores best practices and new strategies for teaching ITLS and administering ITLS programs. The Forum concludes with Q & A to address your own ideas, concerns and suggestions for the future. NOTE: No continuing education credit is provided for this program.

**Eligibility:** Open to all ITLS Chapter and Training Centre Medical Directors, Coordinators, program administrators and other leaders. All registrants are welcome to attend.

**No charge to attend.**



**NOTE:** CNE credit not available for pre-conference workshops.

**ITRAUMA.org/  
conference**





## *Conference Hotel*

### **HILTON ST. LOUIS AT THE BALLPARK**

**1 S. Broadway, St. Louis, MO 63102 USA**

**Reservations: 314-421-1776 Book online: [ITRAUMA.org/stlouis](http://ITRAUMA.org/stlouis)**

The conference hotel is located in the heart of downtown, right next to Ballpark Village, within 100 yards of Busch Stadium and footsteps from the iconic St. Louis Gateway Arch. The conference room rate of \$145 per night plus all applicable taxes includes complimentary guest room WiFi. **The cutoff date for this rate is October 15, 2018.**

### *Under the Gateway Arch of St. Louis ...*

There's so much to discover in vibrant St. Louis that the list of possibilities can seem overwhelming. Ballpark Village is the Gateway City's newest dining and entertainment district located between Busch Stadium and the conference hotel, with endless options for food, drinks, nightlife, and sports. Or venture a little further to Laclede's Landing, a hot spot combining rich local history with modern entertainment — still just a short walk from the hotel. Stroll along the riverfront and experience some of the city's finest restaurants and nightclubs. Plan your evenings at [explorestlouis.com](http://explorestlouis.com).



### **Travel and Transportation**

Participants should fly into Lambert-St. Louis International Airport (STL), located just 20 minutes from the conference hotel.

### **Language & Currency**

All conference sessions and activities will be presented in English. The official currency of the International Trauma Conference is U.S. dollars (USD).





## *Visiting St. Louis in November*

Crisp autumn air and vibrant foliage signal the arrival of fall in St. Louis.

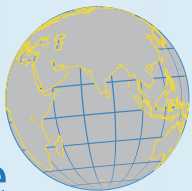
As the season winds down, the heat and humidity dissipate, making it the perfect time of year to get out and explore the city on foot.

The weather in early November is expected in the mid-50s F (10 - 15 C), so plan to bring a jacket for the evenings to enjoy all that St. Louis has to offer at this time of year.

**[ITRAUMA.org/conference](http://ITRAUMA.org/conference)**







# Exhibit Hall Preview

Look for these industry leaders and more in the Exhibit Hall!

## Gold Sponsors



## Want to exhibit?

Exhibiting at the International Trauma Conference brings you face-to-face with key decision makers who purchase emergency medical products and services for EMS systems, hospitals and training institutions around the world. Target a diverse audience of industry professionals with ITLS. **Exhibit and sponsorship opportunities available! Find out more at [ITRAUMA.org/exhibit](http://ITRAUMA.org/exhibit).**

## Silver Sponsors

### Trauma Center



NATIONAL LEADERS IN MEDICINE



## Exhibitors





# Registration

## Two Day Registration Includes:

- Entry to all conference sessions and events on November 9-10
- Entry to the exhibition hall
- Access to the conference mobile app with all educational session materials
- Admittance to the Opening Reception on November 8
- Continental breakfast and breaks on November 9-10, plus lunch on November 9 (Lunch on November 10 is on your own)

## One Day Registration Includes:

- Entry to all conference sessions and events on your specified day
- Entry to the exhibition hall (Friday only)
- Access to the conference mobile app with all educational session materials
- Continental breakfast and breaks on your specified day (Lunch on your own)
- Ticket to Opening Reception sold separately (\$20 per ticket)

**Social event tickets are sold separately for ALL registrants.**

## Food Truck Round-Up

A selection of St. Louis food truck favorites will be on-site at the hotel on Saturday, November 10 with great local options for on-your-own lunch. Cash and credit cards accepted at all.

## Great Discounts in 2018!

### Armed Forces Personnel & Full-Time Students

Discounted rates are available for all Armed Forces personnel (Active Duty and Active Reserve) and full-time students for the full 2-day conference. Proof of status is required.

### Competition Team Pricing

A discounted rate is available for the members of a Competition Team. All members registered at this rate must compete in the 2018 Trauma Competition. All registrations must be submitted together to qualify.



**ITRAUMA.org/  
conference**



# INTERNATIONAL TRAUMA conference



# Registration

register online

ITRAUMA.org/conference

register by phone

888.495.4857  
630.495.6442 (int'l callers)

register by fax

630.495.6404

register by mail

3000 Woodcreek Drive, Suite 200  
Downers Grove, IL 60515 USA

**REGISTER BEFORE OCTOBER 1 FOR LOWEST REGISTRATION RATES!**

## Registrant Information

Please print clearly and circle your credentials. If your credentials do not appear below, please provide. The information you supply here will be used to generate conference badges and other materials.

First & Last Name

MD, DO, FACEP, RN, EMT, EMT-P, FF, NRP, NREMT-P, ACP, Sr. Para., PA, TEM, TEM-P, SFC, CCFP

Address

City

State/Province

Country

ZIP/Postal Code

Telephone Number

Email Address (confirmation materials will be sent to this address)

## Registration Fees

### Two Day

Physician/PA/Medical Director

( ) \$449

( ) \$499

Nurse/EMT/EMT-P

( ) \$394

( ) \$434

Armed Forces Personnel\*

( ) \$311

( ) \$361

Full-Time Student\*

( ) \$145

( ) \$185

Competition Team\*

( ) \$862 - 3-Person Team

( ) \$1,152 - 4-Person Team

\*Please see Page 11 for registration details and eligibility requirements for special rates

### One Day

Physician/PA/Medical Director

( ) \$256

( ) \$286

Nurse/EMT/EMT-P

( ) \$216

( ) \$246

I will attend:

( ) Friday, November 9

( ) Saturday, November 10

### Concurrent Session Selection - Saturday, November 10

( ) 1A - Burn Management in the Low-Resource Setting

OR

( ) 1B - Ultrasound Uses in Pediatric Trauma

( ) 2A - Anticoagulation in the Extreme Rural Trauma Patient

OR

( ) 2B - IEDs, Blast Injuries and Treatments

### Pre-Conference Workshops

Critical Ultrasound for

( ) \$175 - with 2-day conference

( ) \$199 - Workshop only

Prehospital Trauma Management

Geriatric Trauma Workshop

( ) \$99 - with 2-day conference

( ) \$129 - Workshop only

ITLS High Threat Trauma Update

( ) \$109 - with 2-day conference

( ) \$139 - Workshop only

Case Based ITLS Workshop

( ) \$69 - with 2-day conference

( ) \$89 - Workshop only

ITLS Leadership Forum

( ) No charge

### Tickets: Social Event at the City Museum (optional)

Tickets are NOT included with registration. All who wish to attend must purchase a ticket. Guests welcome!

\_\_\_\_ Adult Tickets x \$42 = \_\_\_\_

\_\_\_\_ Child Tickets x \$32 = \_\_\_\_

**TOTAL REGISTRATION FEE**

\$ \_\_\_\_\_

**All prices in  
U.S. Dollars**

### Cancellation Policy

Cancellations received by September 28, 2018 will receive a refund minus a \$100 administrative fee. After September 28, 2018, no refunds will be made. To request a refund, please contact ITLS at info@itrauma.org or 630-495-6442, ext. 219.

### First-Time Attendees

**Your first time attending the International Trauma Conference? Please join us!**

( ) Yes, I will attend a networking reception from 5:00 to 6:00 PM on Thursday, November 8

## Payment Method

Please do not send cash. Call ITLS at 630.495.6442 for wire transfer payment.

( ) Check enclosed (payable to ITLS)

( ) VISA ( ) MasterCard

( ) Discover ( ) American Express

Account Number \_\_\_\_\_

Exp. Date: \_\_\_\_\_